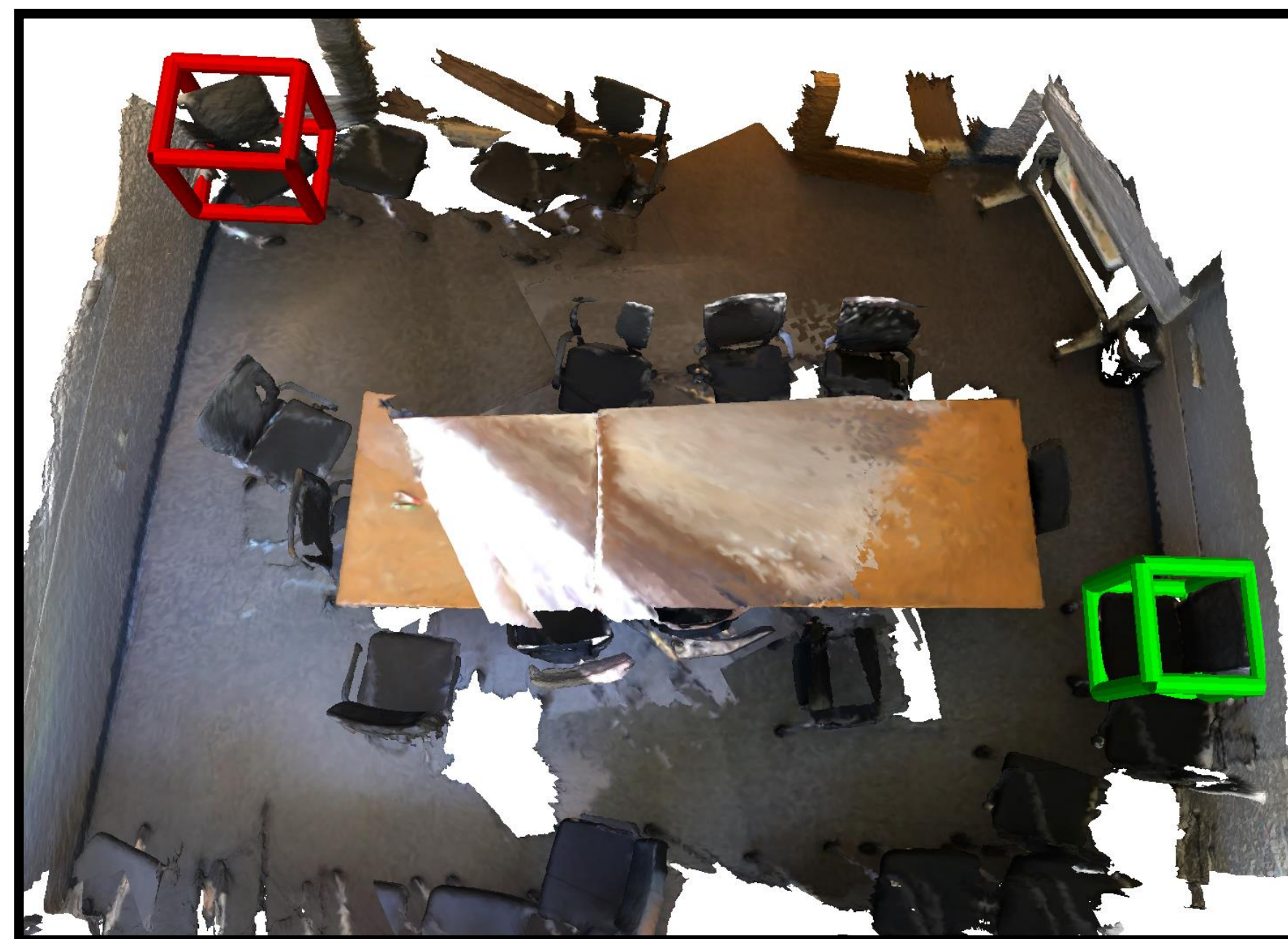


this is a black chair.  
the back of the chair is  
against the wall.

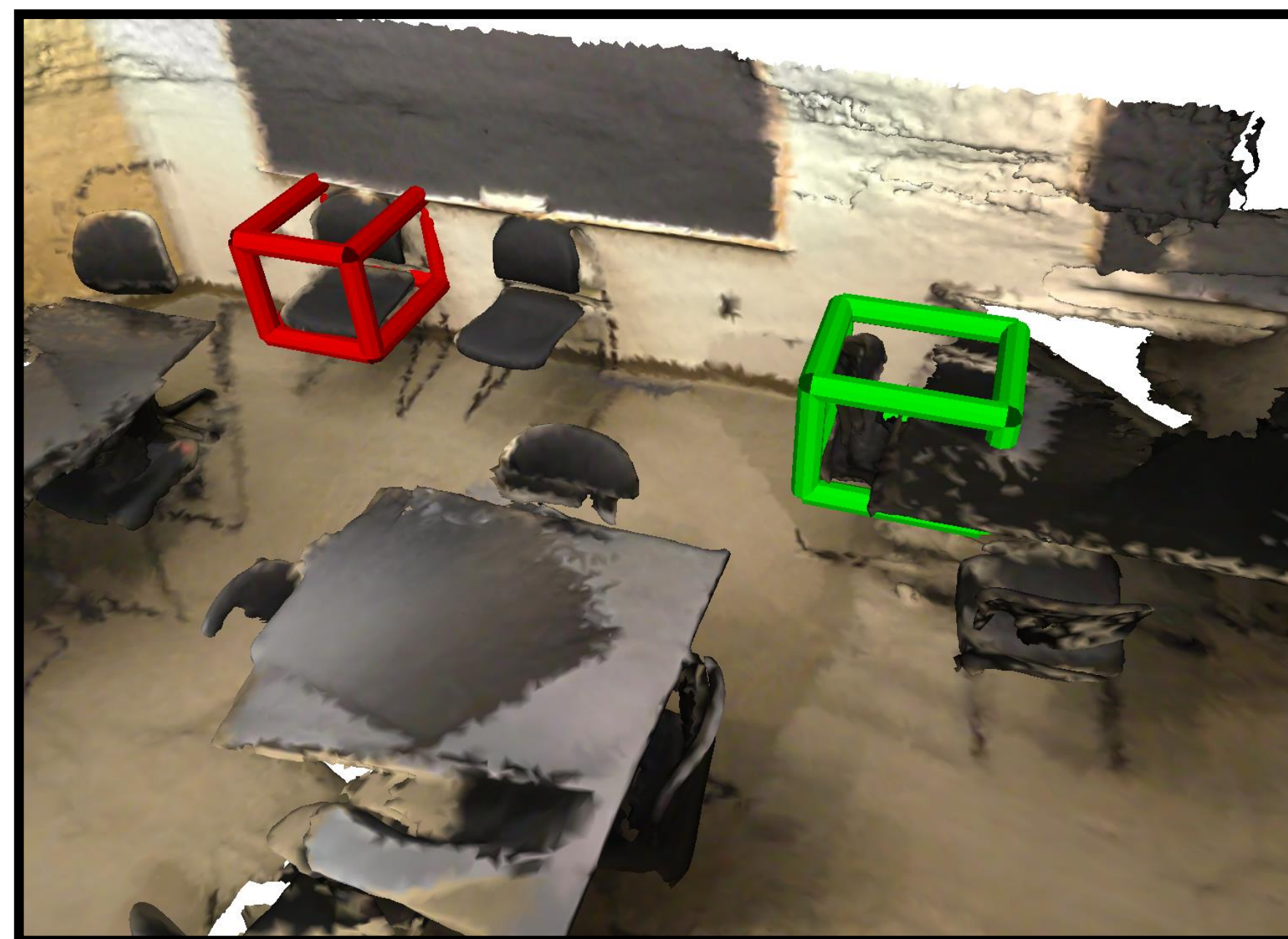


the chair is south of the  
northwestern-most  
bookshelf. the chair is  
gray and has four legs.

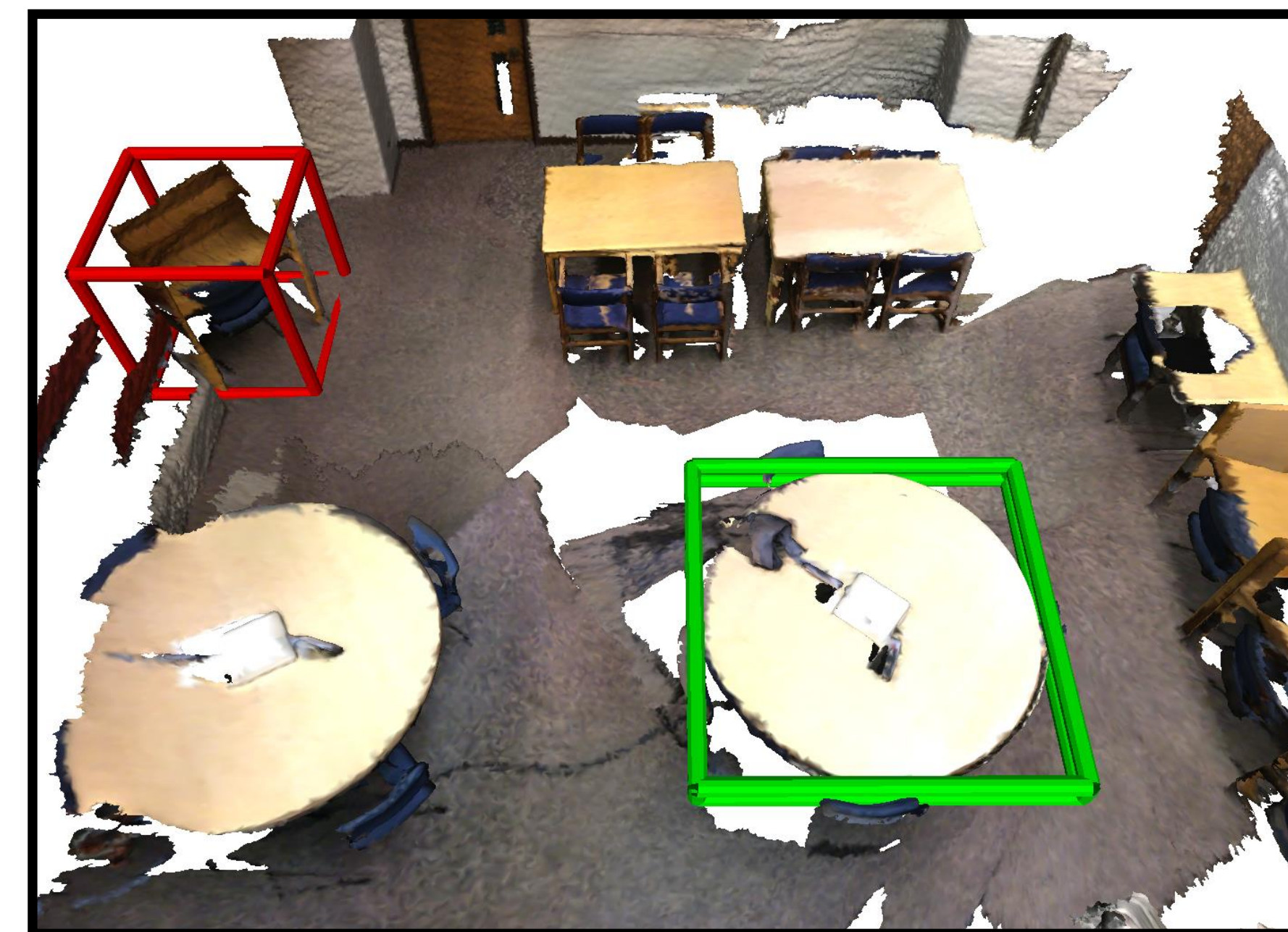


(a) Spatial relation

the gray padded chair  
is on rollers.  
it is the only rolling  
chair at the table.

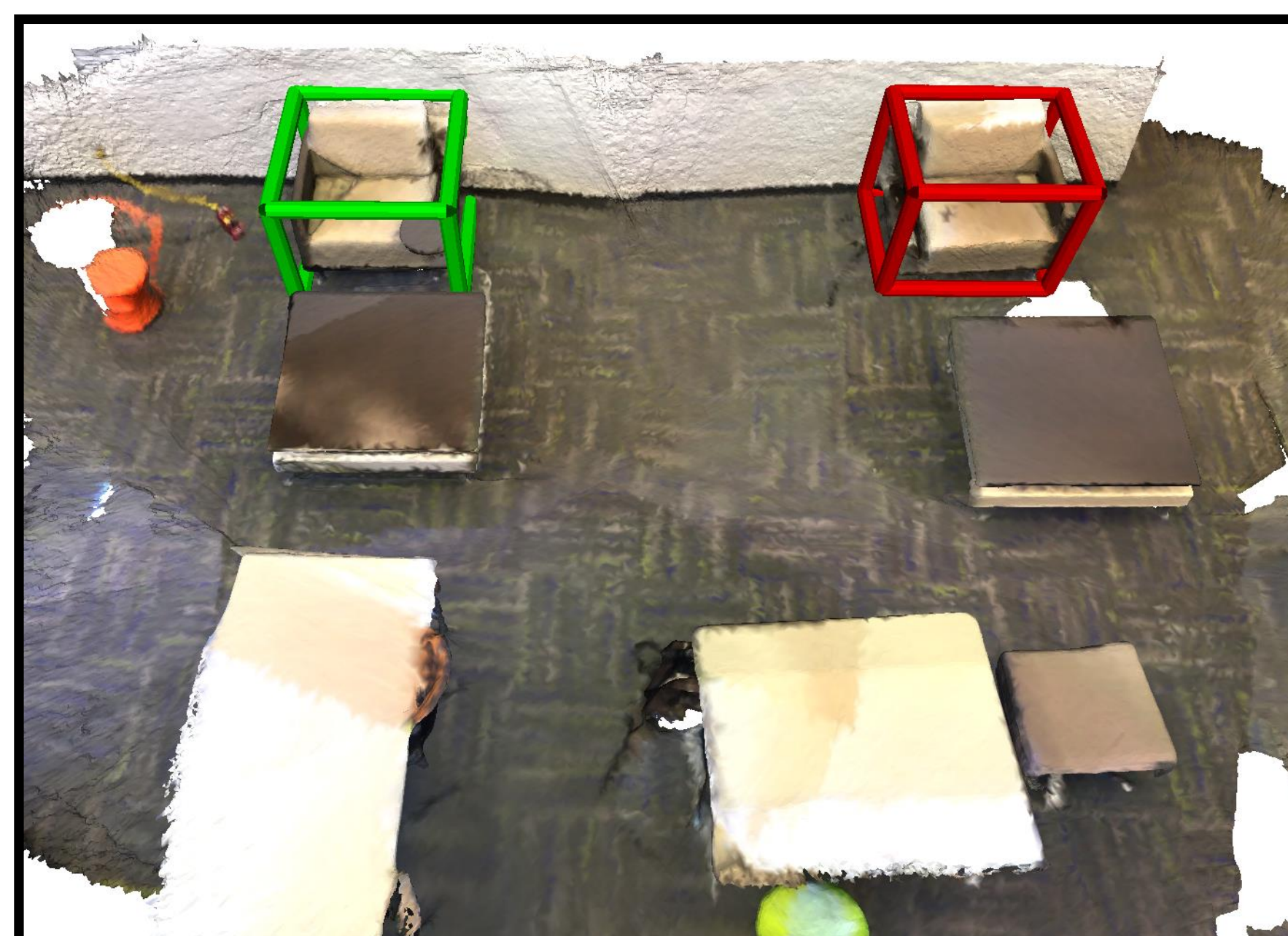


it is a white table. the  
white table is sitting  
behind the two brown  
desks in the far left  
corner of the room.

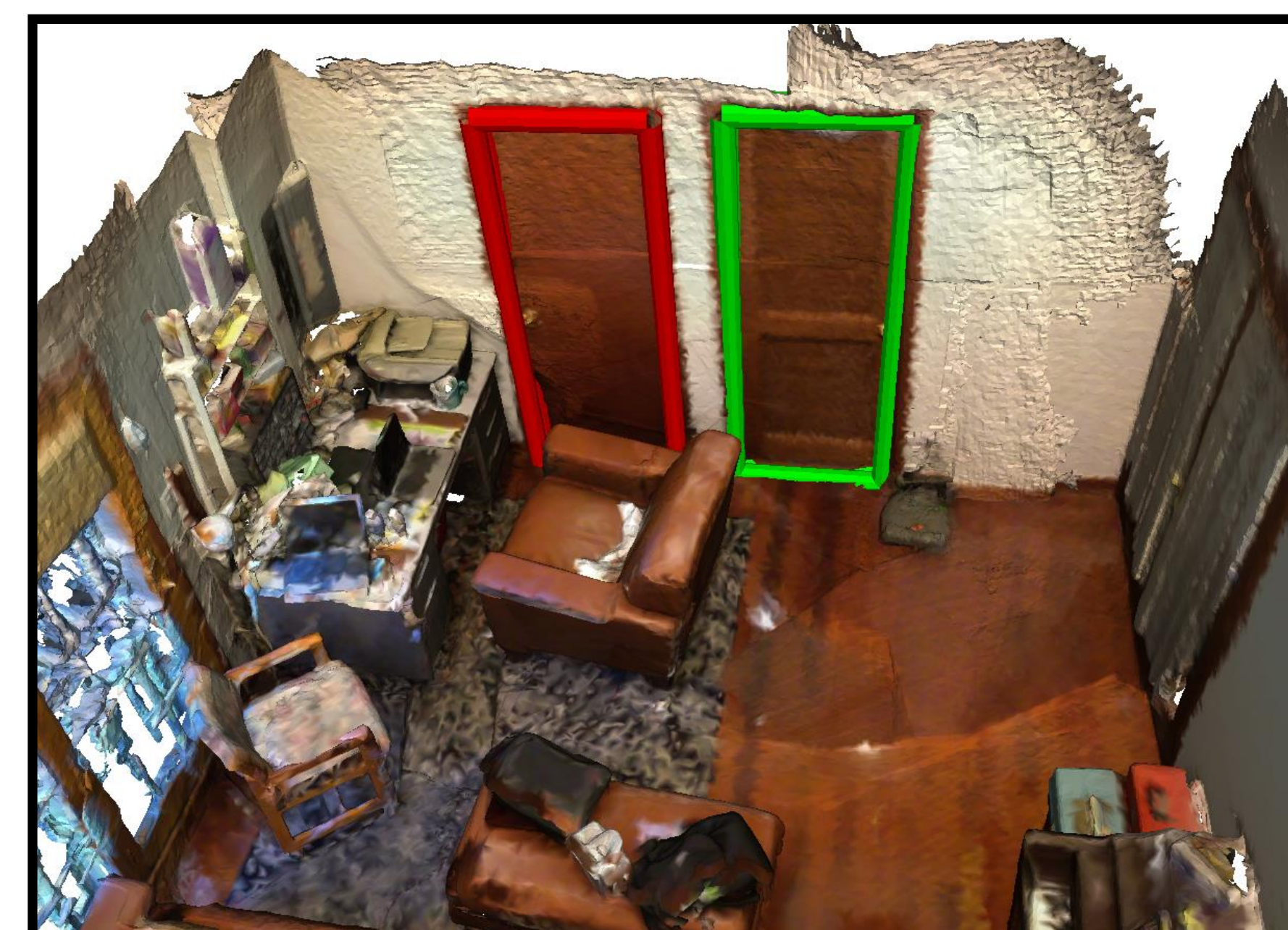


(b) Semantic detail

the chair is in one of  
the sides of the room.  
the color of the chair  
is brown.



this is a brown door.  
it is across from an  
armchair.



(c) Other (referring ambiguity)